



The Villas by the Park offers a great location. Our two, three & four bedroom apartment homes are designed for living. Villas by the Park offers all the amenities and services you expect...with all the comforts of home you deserve.

Homes with Townhome style and a great location at Villas by the Park!

From I-35W in Fort Worth, exit Berry Street and head east. We will be on your right before Mitchell Blvd.

COMMUNITY AMENITIES

Gated Community with Resident Remote
Swimming Pool
Clubhouse / Activity Center
Playground Area
Convenient to Downtown
Extraordinary Landscaping
Responsive On-site Professionals

FLOOR PLAN TYPES

2 Bed / 2 Bath 990 Sq. Ft.
3 Bed / 2 Bath 1,174 Sq. Ft.
4 Bed / 2 Bath 1,354 Sq. Ft.

INTERIORS

Gorgeous Spacious Interior Layouts
Eight foot Ceilings*
Ceilings Fans in Living Room
Steel entry Doors w/ Deadbolts & Privacy Viewers
Frost-free Refrigerators w/ Ice Maker
Full-sized Washer / Dryer Connections
Walk-in Closets*
Cable T.V. Connections
Kitchen Pantry & Linen Cabinets*

*Available in select homes

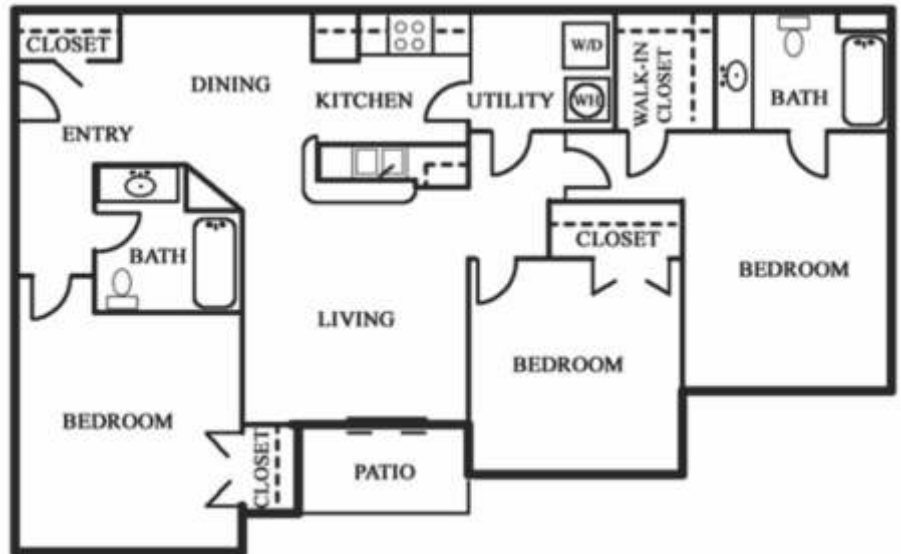


FLOOR PLAN TYPES

VillasByTheParkTX.com



2 Bed / 2 Bath 990 Sq. Ft.*



3 Bed / 2 Bath 1,174 Sq. Ft.*



4 Bed / 2 Bath 1,354 Sq. Ft.*

2450 E. Berry St. South, Fort Worth, TX 76119

(817) 535-6343

*Square footage is approximate. Actual floor plans may vary.

